

Stoney Creek Fishing and Hunting Club

May 9, 2025

meeting Fishing Report

Statewide news:

- **No new regulations to report.**
 - *Trout stocking in full swing* – Checkout the DNR website: Trout Stocking Map.

Forecast Summary:

- Main Bay surface water temperatures have jumped to 60 degrees and River temperatures are slightly warmer. *Fishing should start to pick up.*
- *Detailed & up-to-date fishing conditions in your area, refer to check out Eyes on the Bay's <https://eyesonthebay.dnr.maryland.gov/eyesonthebay/clickbeforecast.cfm>*

Upper Chesapeake Bay

Rock Fish:

- Opens May 16th, recommend Anglers can view an interactive [Striped Bass Regulation Map](#) on the Maryland DNR website to see when and where closures take place.
 - *Attached 2025 Striped Bass/Rockfish regulations*
 - *Once the season opens, anglers will be allowed to keep one fish per person per day with a slot limit of 19" to 24".*

White Perch: Hanging around docks and shorelines especially near down trees.

Blue Catfish: The lower Susquehanna, Elk and the middle and upper sections of the Chester River hold some of the greatest populations of blue catfish.

Snake Head: Grass beds are starting to grow and thicken up in the Upper Bay tidal rivers. These areas are prime locations to target northern [snakehead](#), and with the weather and water temperatures warming up, they should be very active.

- The Bush River, Gunpowder River, Middle River, and Back River are all prime destinations to search for snakeheads.
 - While fishing thick vegetation and marsh shorelines, topwater frogs are excellent lure choices. Areas of open water can be covered by throwing chatterbaits, spinners, and swimbaits.

Middle Chesapeake Bay

Rock Fish:

- Opens May 16th, recommend Anglers can view an interactive [Striped Bass Regulation Map](#) on the Maryland DNR website to see when and where closures take place.
 - *Attached 2025 Striped Bass/Rockfish regulations*
 - *Once the season opens, anglers will be allowed to keep one fish per person per day with a slot limit of 19” to 24”.*
 - Middle Bay locations such as the Bay Bridge, Poplar Island, and the remnants of James Island should be holding fish.

White Perch:

- Hanging around docks and shorelines especially near down trees.
- Reports of [white perch](#), [spot](#), and [croaker](#) are now being caught on the lower Pax near Solomons.
- Additional reports of [speckled trout](#) or [red drum](#) in Mill Creek on the Lower Pax.

Blue Catfish:

- Bite is still on from Sandy Point all the way down to Solomons.
 - Best fishing on the Choptank River from the town of Choptank to Denton.

Crabs:

- Crabs are on the move and the local waterman are starting to see an end to the Peelers run. With that said, give it a couple weeks for them to fatten up.

Fresh water

- DNR has introduced a monitoring database on your favorite freshwater fish species at your preferred fishing spots.
 - A new impoundment mapping tool is available on the [Freshwater Fisheries Fishing Lakes and Ponds webpage](#).
 - The online map highlights fishing opportunities for gamefish species in reservoirs, lakes, and ponds with public access.

Walleye:

- Fishing for a mix of walleye and smallmouth bass is good this week at Deep Creek Lake and the upper Potomac River.

- The upper Potomac River is offering good fishing for the walleye and smallmouth bass this week.
 - Casting a variety of tubes, swimbaits, paddletails, and small crankbaits are a good way to target them along current breaks, mid-river boulders and submerged ledges.

Largemouth Bass:

- Largemouth bass are in a pre-spawn mode of behavior in the ventral, southern, and eastern regions of Maryland and this activity will increase in the next few weeks.

Crappie:

- The area on the northeast side of the Wilson Bridge and the marina docks below the bridge to Fort Washington provides one of the best tidal areas to fish for crappie.

BAITs – Gear - Times

White Perch:

- Fishing grass shrimp and pieces of bloodworm on a simple bottom rig fished close to a dock, or casting small spinners and soft plastic baits *during the early morning and evening hours along shorelines.*

Blue Catfish:

- A variety of cut baits work well; white perch, gizzard shad, menhaden, and American eel are excellent baits, but chicken parts and scented baits also work well. *A fish finder rig or sliding sinker rig with a small float in front of a 5/0 to 7/0 circle hook is the most popular rig for fishing blue catfish.*

Snakeheads:

- Casting white paddletails and chatterbaits near emerging grass and shoreline submerged brush is a good tactic. *Often the sunny side of creeks during the afternoon hours is a good place to target fish seeking slightly warmer waters.*

Walleye:

- Casting a mix of swimbaits, flukes and small crankbaits with good results.

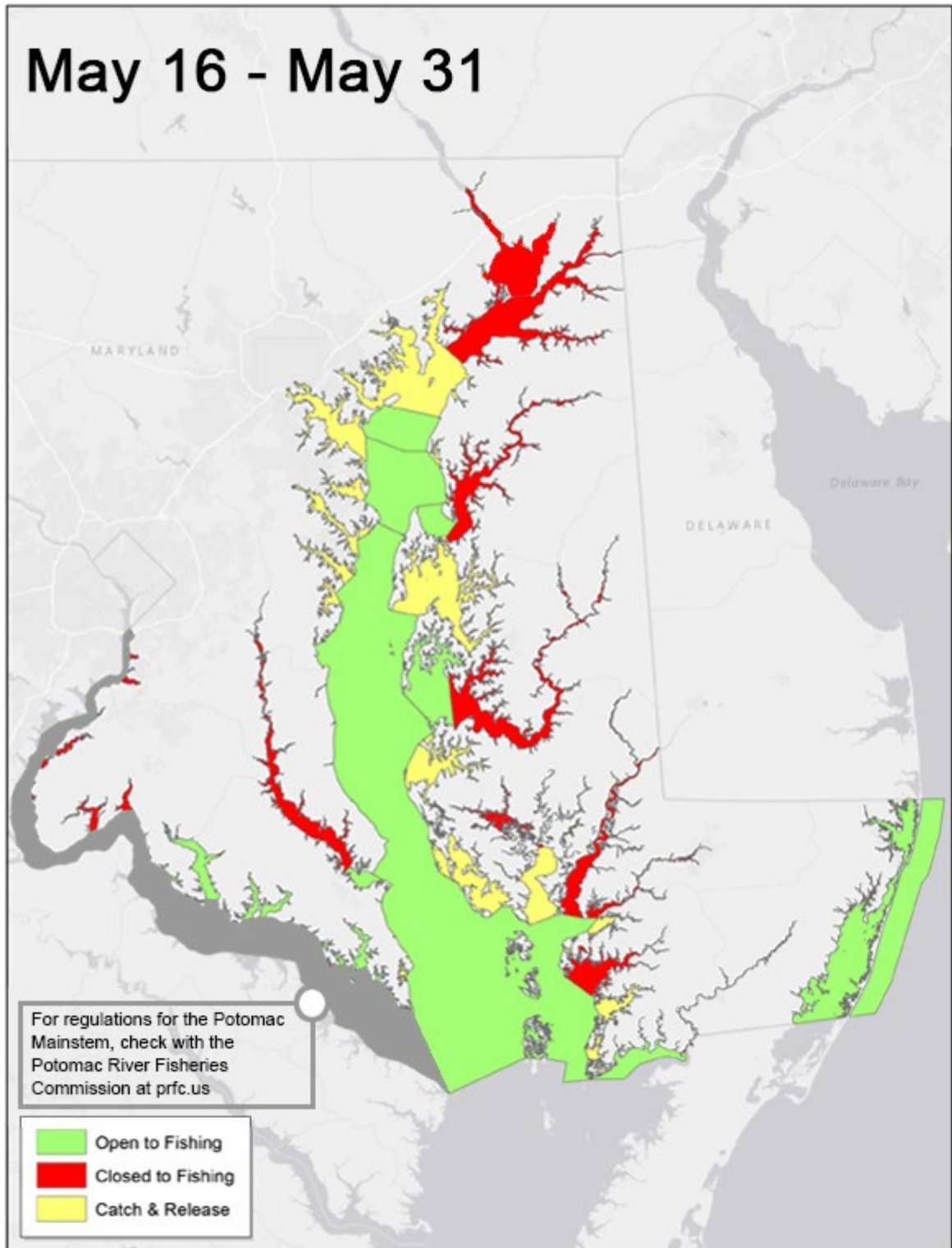
Largemouth Bass:

- A mix of spinnerbaits, lipless crankbaits, swimbaits, flukes, and jerkbaits are all good choices to use.

Crappie:

- Rigging small minnows or marabou jigs under a slip bobber and fishing close to structure.

https://dnr.maryland.gov/fisheries/PublishingImages/StripedBassRegs05-16_05-31P.jpg





Maryland › Fishing › **Striped Bass**

Striped Bass

It is Illegal:

- To possess any cut up or filleted striped bass at any time aboard any boat on the tidal waters of Maryland. Striped bass must be landed whole.
- To use more than two hooks or two sets of hooks for each rod or line. Artificial lures or plugs with multiple hooks are considered 1 set of hooks.
- To use eels as bait while fishing for striped bass with hook and line from Dec. 11–May 15, inclusive, in the Chesapeake Bay and its tidal tributaries.
- To cull striped bass.
- To possess striped bass while fishing in the Chesapeake Bay or its tidal tributaries from midnight to 5 a.m.
- To remove a striped bass from the water with a gaff or a cast net.
- To take or shoot striped bass with a spear gun and spear in the tidal waters of the state.
- To fish for striped bass by any means or practice catch-and-release of striped bass in designated spawning areas from March 1–May 31.
- To intentionally snag a striped bass.

Striped bass may not be caught, harassed or possessed in the Exclusive Economic Zone, which stretches from 3–200 miles off the coast.

Chesapeake Bay and Tidal tributaries (excluding the Susquehanna Flats, Lower Susquehanna River and Northeast River)				
SEASON	FISHING LOCATIONS ALLOWED	CREEL AND SIZE LIMITS	REGULATIONS	RESTRICTIONS AND REMARK
JAN. 1– FEB. 28	All Maryland Chesapeake Bay waters and the Potomac River are open to catch and release	No harvest	Catch and release only	<ul style="list-style-type: none"> • Directed catch and release of striped bass in


MARYLAND
FISHING

				<p>hooks.</p> <ul style="list-style-type: none"> Eels may not be used as bait.
MAR. 1– MAR. 31	<p>Chesapeake Bay downstream from a line between Abbey Point and Worton Point to the Virginia line including Tangier and Pocomoke Sounds.</p>	<p>No harvest</p>	<ul style="list-style-type: none"> Stinger (trailing) hooks are prohibited. Barbless hooks are required when trolling. Non-offset circle hooks or J hooks with a gap of less than ½ inch are required when using natural bait. No more than 6 lines may be employed while trolling regardless of the number of anglers on board. 	<ul style="list-style-type: none"> Spawning rivers and the Upper Bay spawning area are off limits until June 1 to striped bass fishing. Eels may not be used as bait. See Striped Bass Regulations Maps
APR. 1– MAY 15	<p>All areas closed to striped bass fishing.</p>	<p>CLOSED</p>	<ul style="list-style-type: none"> No catch and release fishing. Attempting to catch striped bass is illegal during this time period. 	
MAY 16– MAY 31	<p>Chesapeake Bay downstream from a line drawn from the south corner of Hart-Miller Island Dike to the end of MD Route 21 at Tolchester and south to the MD/VA line, excluding all bays, sounds, tributaries, creeks and rivers.</p>	<p>1 fish per person per day. Must be at least 19" and cannot exceed 24".</p>	<ul style="list-style-type: none"> Eels may not be used as bait. See Striped Bass Regulations Maps Anglers must use non-offset circle hooks when live-lining or chumming; Anglers must use non-offset circle hooks when using fish, crabs or worms as bait and targeting striped bass, or when using processed baits 	



	downstream of a line drawn from Hail Point to Long Point to Ferry Point; Patuxent River and its tributaries downstream of a line drawn from Point Patience to the west point of land at the entrance of Little Kingston Creek; and Choptank River and its tributaries downstream of a line drawn from Holland Point to a point of land at the west entrance of Chapel Creek are open.			
JUNE 1– JULY 15	All areas open	1 fish per person per day. Must be at least 19" and cannot exceed 24".	See Striped Bass Regulations Maps Anglers must use non-offset circle hooks when live-lining or chumming; Anglers must use non-offset circle hooks when using fish, crabs or worms as bait and targeting striped bass, or when using processed baits and targeting striped bass.	
JULY 16– JULY 31	All areas closed to striped bass fishing.	No possession allowed	No catch and release fishing for striped bass allowed. Attempting to catch striped bass is illegal during this time period.	
AUGUST 1– DECEMBER 10	All areas open	1 fish per person per day. Must be at least 19" and cannot exceed 24".	See Striped Bass Regulations Maps Anglers must use non-offset circle hooks when live-lining or chumming; Anglers must use non-offset circle hooks when using fish, crabs or worms as bait and targeting striped bass, or when using processed baits and targeting striped bass.	
DEC. 11– DEC. 31	All areas are open to catch and release fishing only.	No harvest allowed	Catch and release only	Eels may not be used as bait.

Susquehanna Flats, Lower Susquehanna River and Northeast River

SEASON	FISHING LOCATIONS ALLOWED	CREEL AND SIZE LIMITS	REGULATIONS	RESTRICTIONS AND REMARKS



**MARYLAND
FISHING**

			Date
<p>MAR. 1– MAR. 31</p>	<p>Susquehanna Flats, upstream of a line from Sandy Point to Turkey Point and the Susquehanna River downstream from a line connecting the Susquehanna State Park boat ramp at Lapidum (defined by Lat. 39°35.86' N and Long. 76°07.67' W) to Twin Rocks (defined by Lat. 39°36.17' N and Long. 76°07.56' W) to Tomes Wharf in Port Deposit (defined by Lat. 39°36.23' N and Long. 76°06.99' W); and the Northeast River. Note: The "Tomes Wharf" coordinate is closest to Lee's Landing Dock Bar.</p>	<p>Catch and Release only</p>	<ul style="list-style-type: none"> • Stinger hooks are prohibited. • Barbless hooks are required when trolling. • Non-offset circle or J hooks with less than ½ inch gap are required when using bait. • No more than six lines per boat are allowed when trolling. • Eels may not be used as bait.
<p>APR. 1– MAY 31</p>	<p>All waters upstream of a line from Abbey Point to Worton Point closed to striped bass fishing.</p>	<p>No possession allowed</p>	<ul style="list-style-type: none"> • No catch and release fishing for striped bass allowed. Attempting to catch striped bass is illegal during this time period.
<p>JUNE 1– JULY 15</p>	<p>All areas open</p>	<p>1 fish per person per day. Must be at least 19" and cannot exceed 24".</p>	<p>See Striped Bass Regulations Maps Anglers must use non-offset circle hooks when live-lining or chumming; Anglers must use non-offset circle hooks when using fish, crabs or worms as bait and targeting striped bass, or when using processed baits and targeting striped bass.</p>
<p>JULY 16– JULY 31</p>	<p>All areas closed to striped bass fishing.</p>	<p>No possession allowed</p>	<p>No catch and release fishing for striped bass allowed. Attempting to catch striped bass is illegal during this time period.</p>
<p>AUGUST 1– DECEMBER 10</p>	<p>All areas open</p>	<p>1 fish per person per day. Must be at least 19" and cannot exceed 24".</p>	<p>See Striped Bass Regulations Maps Anglers must use non-offset circle hooks when live-lining or chumming; Anglers must use non-offset circle hooks when using fish, crabs or worms as bait and targeting striped bass, or when using processed baits and targeting striped</p>



DEC. 31	release fishing only.	allowed	only	as bait.
---------	-----------------------	---------	------	----------

Atlantic Ocean, Coastal Bays and their tributaries				
SEASON	FISHING LOCATIONS ALLOWED	CREEL AND SIZE LIMITS	REGULATIONS	RESTRICTIONS AND REMARKS
JAN. 1– DEC. 31	No area restrictions in state waters	1 fish per person per day, 28–31 inches	Striped bass may not be caught, harassed or possessed in the Exclusive Economic Zone, which stretches from 3–200 miles off the coast.	Must always use non-offset circle hooks when using fish, crabs or worms as bait or processed baits (treble hooks are prohibited) when targeting striped bass.

Nontidal				
SEASON	FISHING LOCATIONS ALLOWED	CREEL AND SIZE LIMITS	REGULATIONS	RESTRICTIONS AND REMARKS
RESERVOIRS	All nontidal reservoirs, lakes, and ponds.	18 inch minimum size; 2 fish per person per day—only one of those fish may be larger than 30 inches		Open Year Round
NONTIDAL RIVERS AND STREAMS	Closed at all times			

Annual Saltwater Angler Registration

The Maryland Saltwater Angler Registration is **free and required** for a saltwater angler who does not hold an individual license and is fishing:

- At a free fishing area
- On a boat with a Consolidated Bay & Coastal Sport Boat License
- On salt and tidal waters as a waterfront property owner or family member from your private property
- From private property or an attached pier on the tidal Potomac River, as an owner or guest

REGISTER HERE



Maryland Annual Saltwater Angler Registration is free and required for anglers fishing without an individual license. This includes fishing at free fishing areas, on licensed boats, from private waterfront properties, and tidal Potomac River piers. Scan the QR code to register online and stay compliant with Maryland fishing regulations.